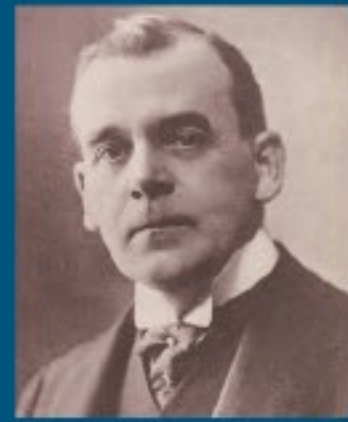


# 1900s

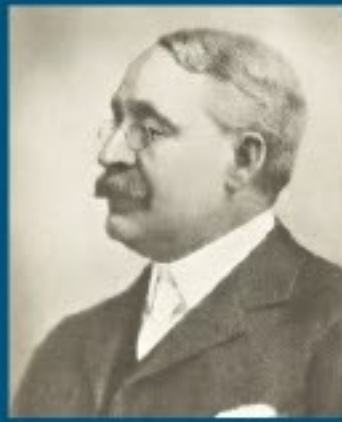
## BIMCO NEWS ...

BIMCO founded under the title of the Baltic and White Sea Conference in Copenhagen. (February 1905)

### BIMCO founders:



Johan Hansen



Thomas Cairns



J.F. Myhre

### 1st BIMCO Secretary General:

BIMCO succeeds in establishing the principle of international cooperation between shipowners and merchants where only aggressive competition had existed before.

“With an international association we shall be able to protect ourselves successfully against charters with unfavourable conditions, and we shall indeed be united and strong enough to do good work in the furtherance of our common interest.”

—Thomas Cairns, 1905

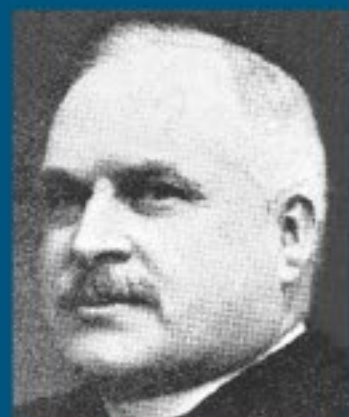
### BIMCO Presidents:



Adolf Carl  
Denmark,  
1905–1908

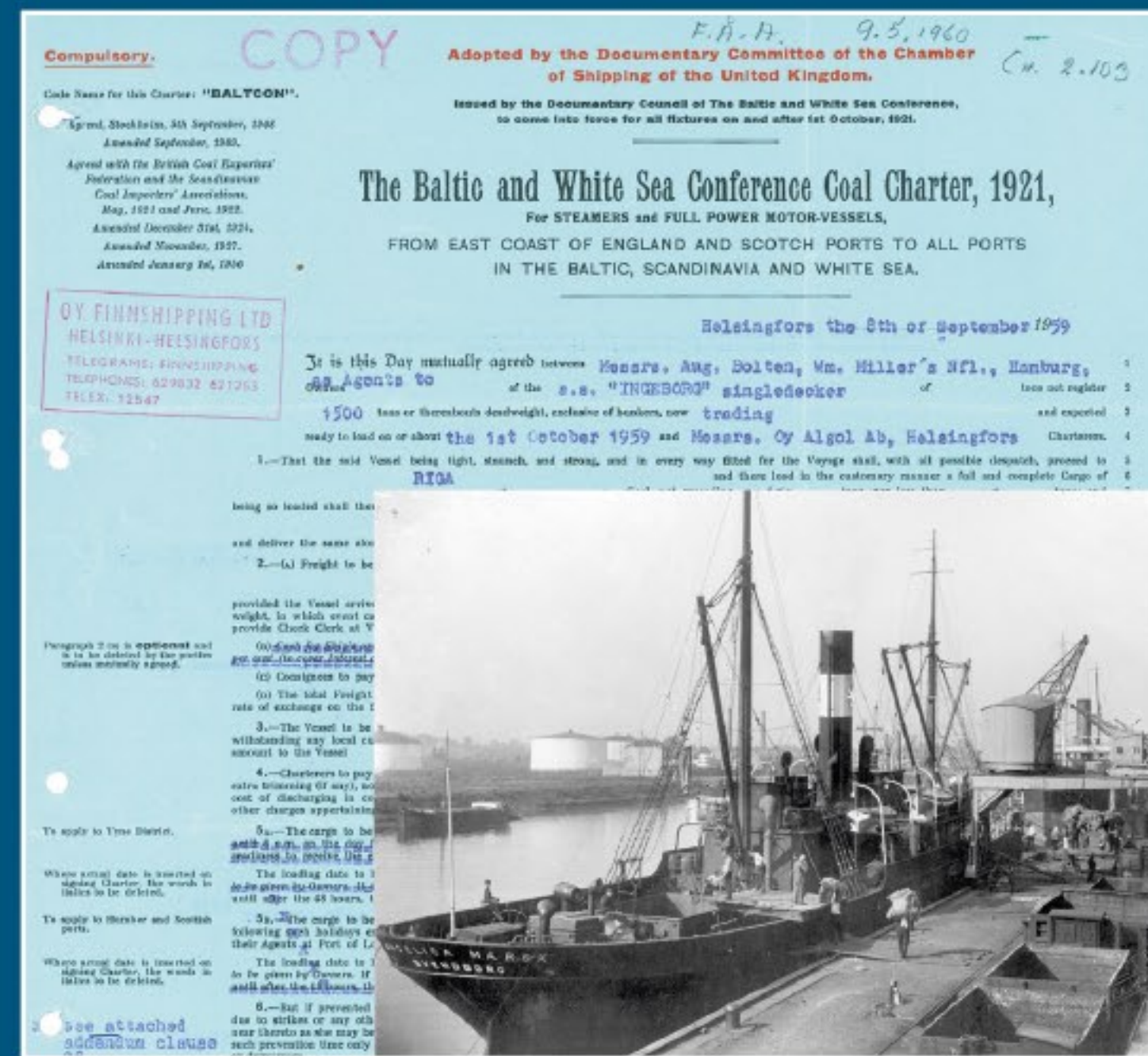


Thomas Cairns  
United Kingdom,  
1908



Lars Krogus  
Finland,  
1908–1911

### BIMCO's first charter party BALTCON adopted. (1908)



BALTCON, BIMCO's first charter party.

### Brokers admitted as members to BIMCO. (1909)

## GENERAL SHIPPING NEWS ...

Traditional sailing vessels move to steam-powered ships, with steel hulls replacing wooden frames.

Turbine engines introduced increasing speed and efficiency of ships.



Crew of a merchant navy vessel gathered for a group photograph (c. 1900s/1910s)

Construction of the Panama Canal begins.

## Global Population



**1.6 billion**

## Global Average Temperature

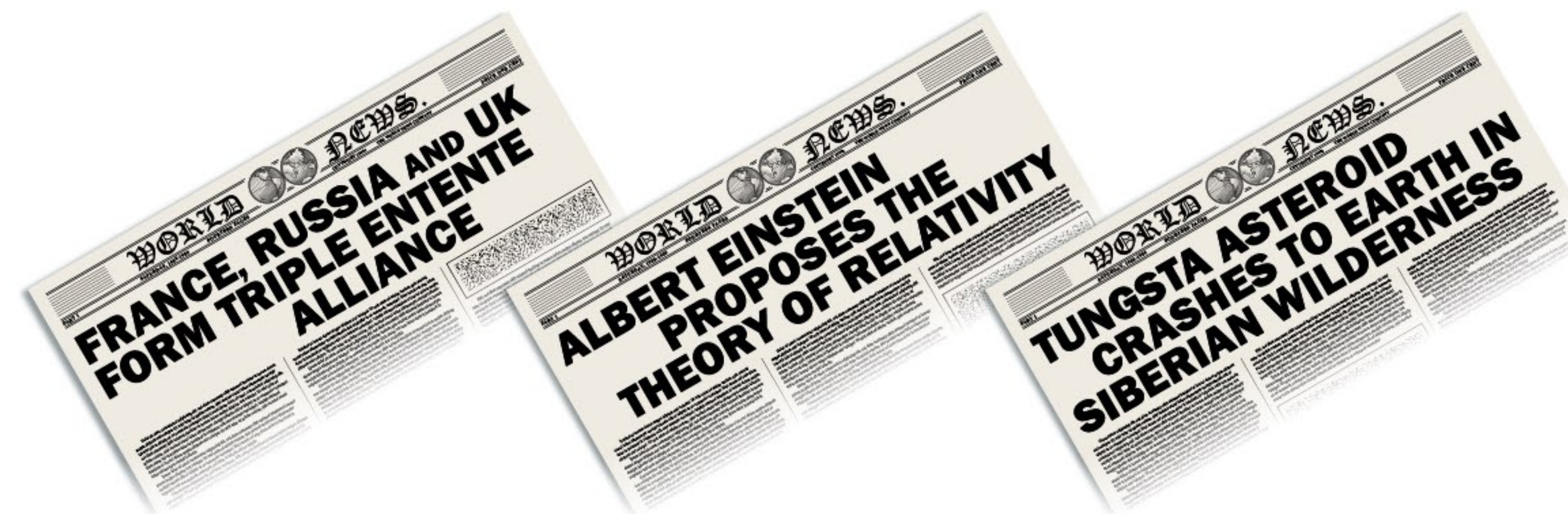


**13.74°C**

## Average Atmospheric CO<sub>2</sub>



**296 ppm**

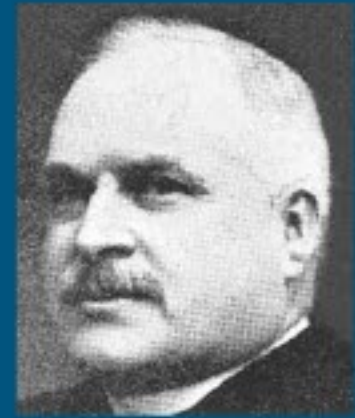




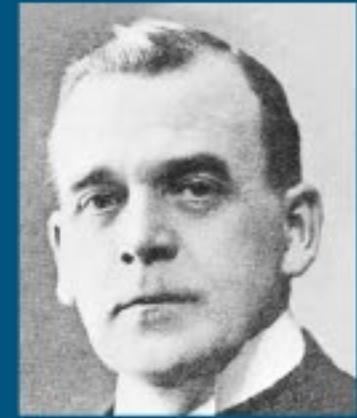
# 1910s

## BIMCO NEWS ...

### BIMCO Presidents:



Lars Krogius  
Finland,  
1908-1911



Johan Hansen  
Denmark,  
1911-1912

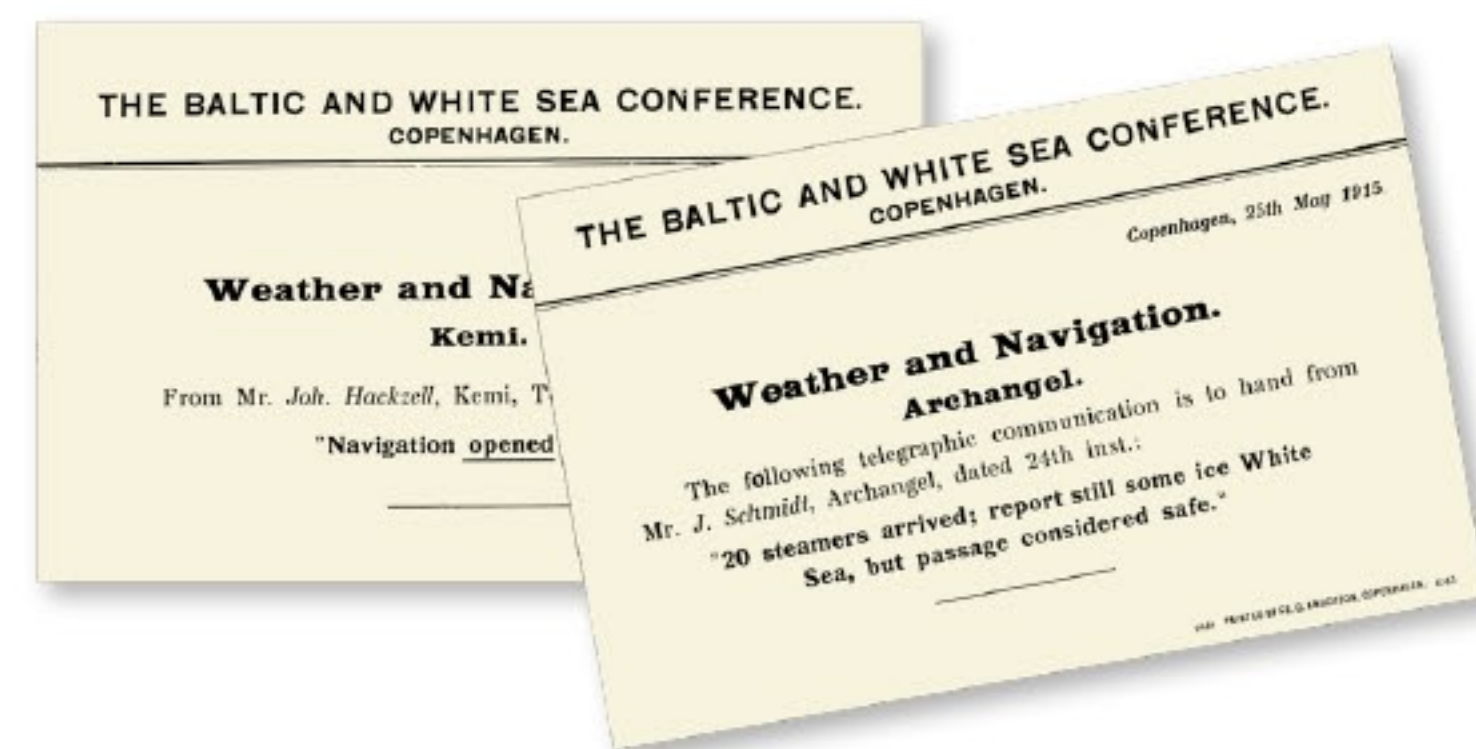


Lord Kirkley  
United Kingdom,  
1912-1923

BIMCO publishes the first edition of the Holiday Calendar, which is still published today. (1913)

BIMCO publishes the first compendium of the Handbook of Baltic and White Sea Ports – still published today online.

BIMCO members convene in London to discuss leading issues such as the question of potential wartime capture. (1914)

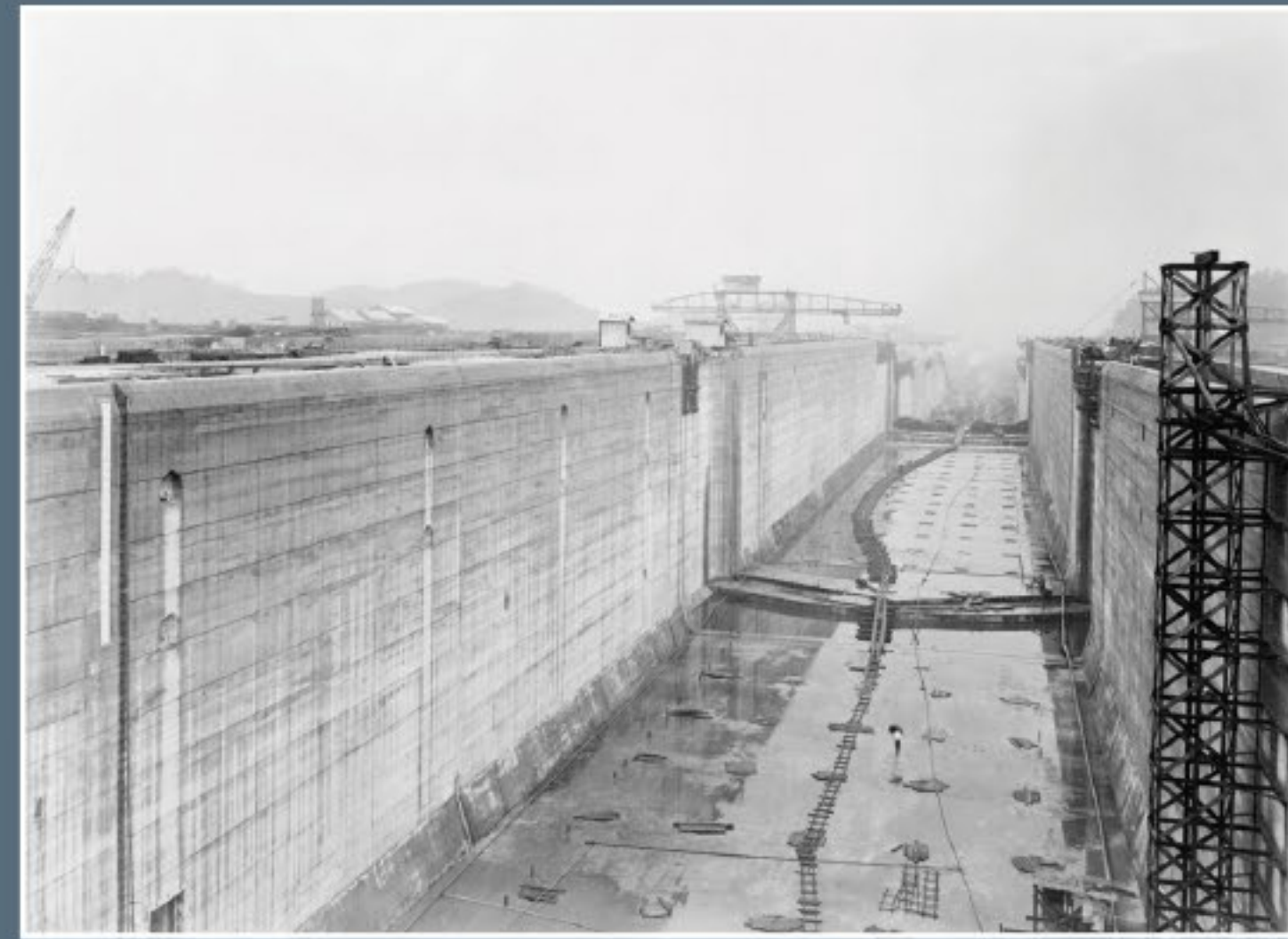


BIMCO operations suspended during World War I apart from assistance in securing information about people missing at sea.

## GENERAL SHIPPING NEWS ...

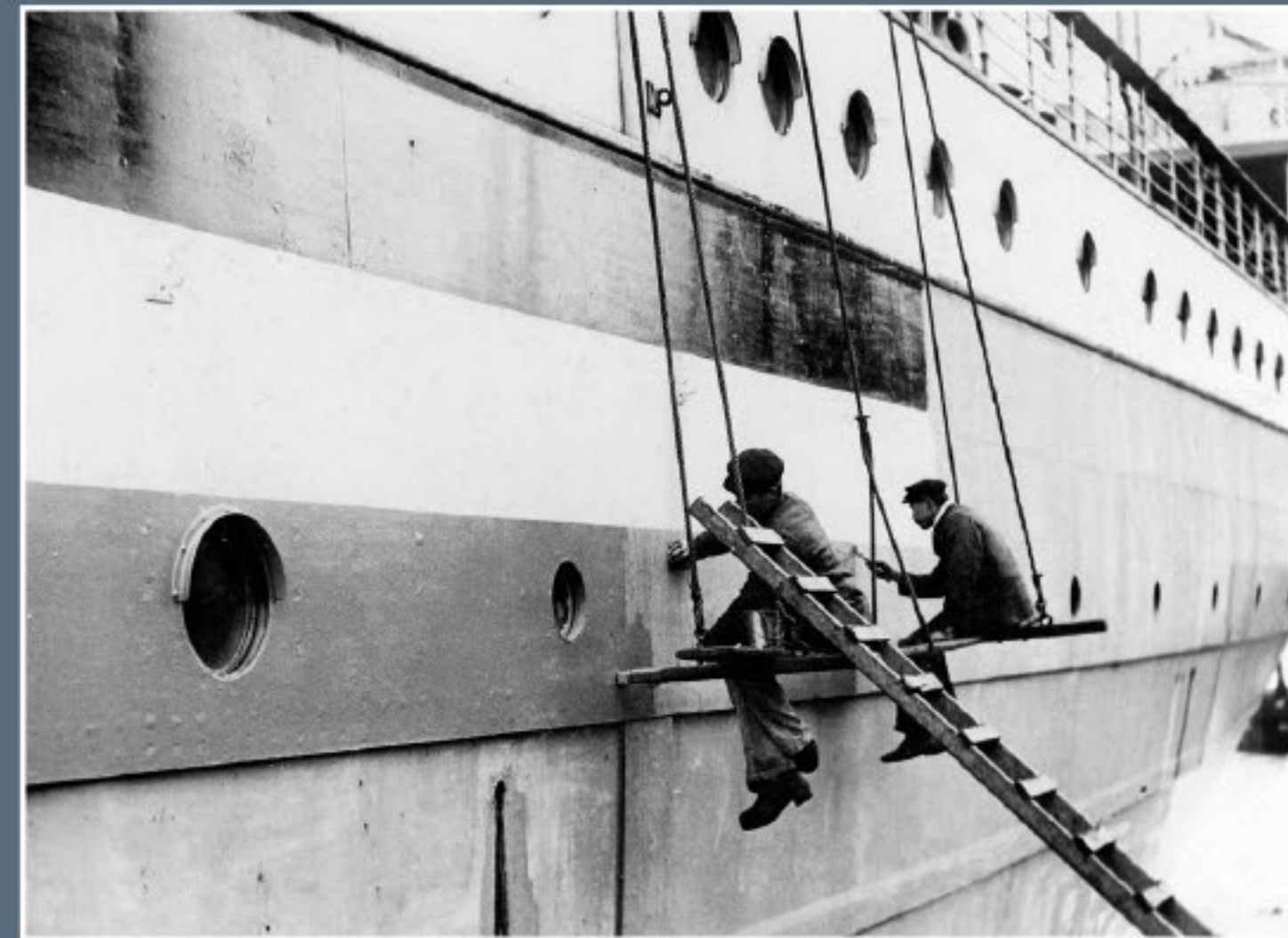
Titanic sinks on maiden voyage.

Panama Canal opens.



Panama Canal construction showing massive locks. (c. 1912)

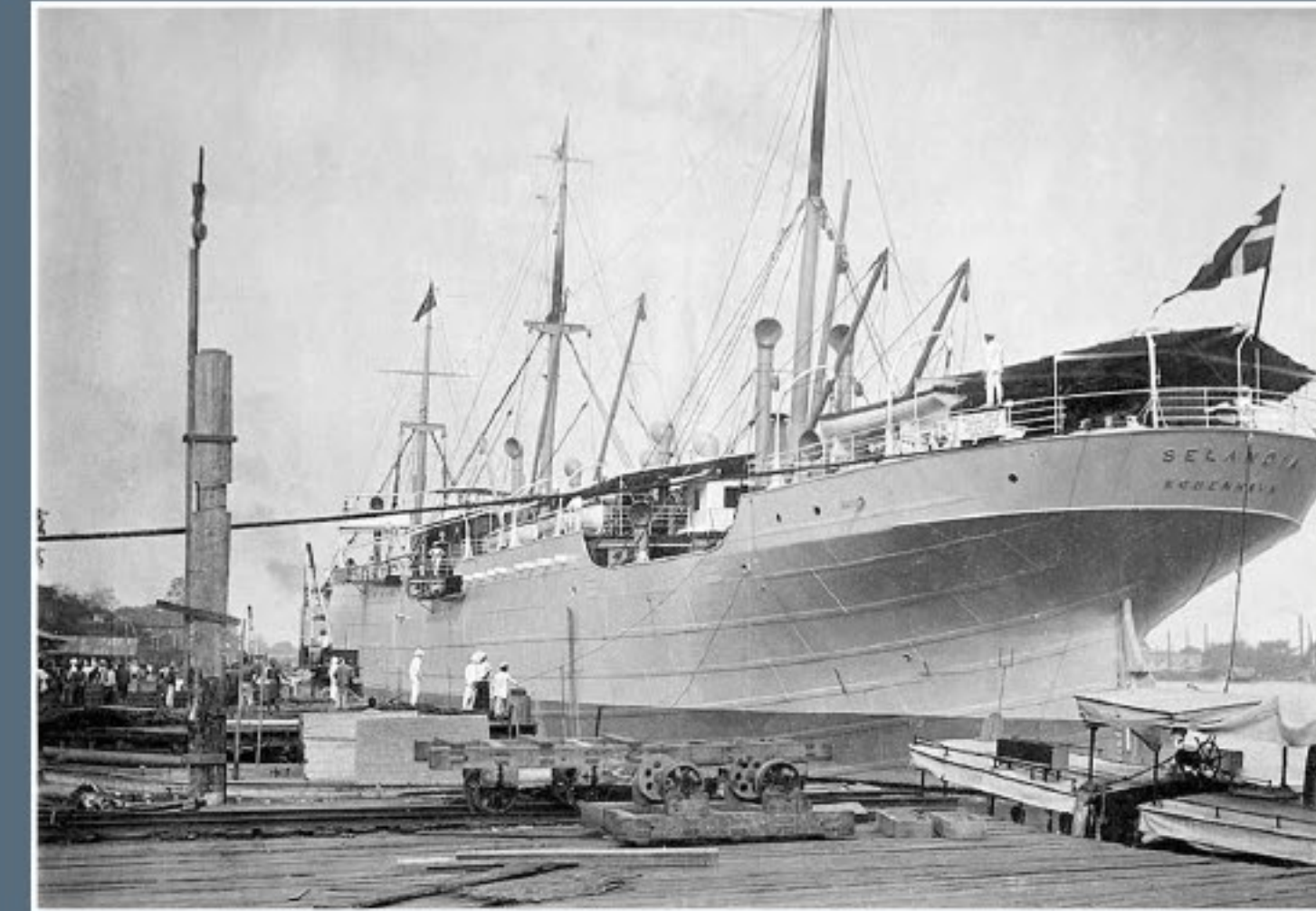
15 million tons of shipping lost during World War I.



Neutral ship in World War I. Two dock workers painting the wall of a freighter with the flag of Netherlands. (1917)

Shipping convoys introduced to protect ships from German U-boat attacks.

Diesel engines become widely adopted in merchant ships.



First ocean-going diesel motor ship for cargo and passengers, Selandia Bangkok. (c. 1912)



## Global Population



**1.75 billion**

## Global Average Temperature



**13.72°C**

## Average Atmospheric CO<sub>2</sub>



**298 ppm**



# 1920s

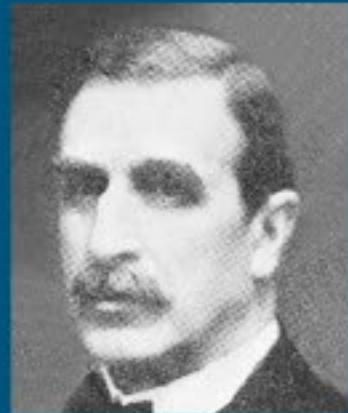
**BIMCO** supporting shipping since 1905

## BIMCO NEWS ...

### BIMCO Presidents:



Lord Kirkley  
United Kingdom,  
1912-1923



Theodore E. Salvesen  
United Kingdom,  
1923-1927



John Denholm  
United Kingdom,  
1927-1929



Sir William A. Souter  
United Kingdom,  
1929-1933



General Meeting in Amsterdam (1924)

First general-purpose voyage charter party is issued by BIMCO – the GENCON form. (1922)

BIMCO changes its name to the Baltic and International Maritime Conference. (1928)

## GENERAL SHIPPING NEWS ...

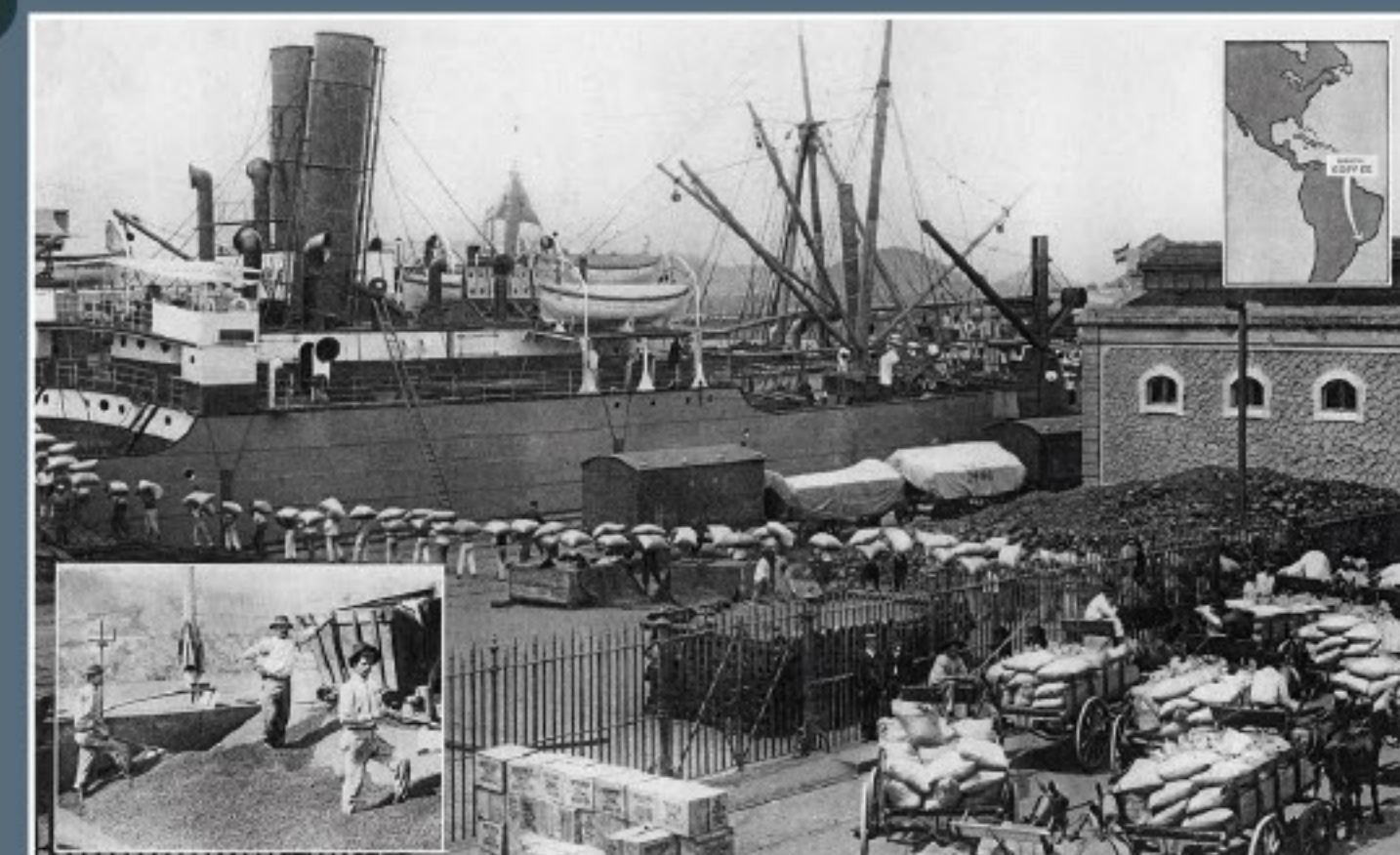
The Jones-White Merchant Marine Act passed by U.S. Congress.



Merchant ships in the Royal Albert Dock, London. (c. 1926-1927)

After WWI, many military and merchant vessels were no longer needed creating a surplus of ships on the market.

The post-war period sees a rise in new maritime powers with the US and Japan both expanding their merchant fleets and commercial routes.



Brazilian porters loading sacks of coffee at Santos  
Santos is the chief port for the Brazilian state of São Paulo, which grows half the world's coffee. Brazil itself yields about three-quarters of the world's yearly supply. The coffee comes to the port in sacks, carried by waggons or motor lorries, and is taken on board the waiting steamer on the heads of porters, as shown in this picture.  
Halftone of Brazilian porters loading sacks of coffee at Santos, sometime in the early 1920s. (1927)

## Global Population



**2 billion**

## Global Average Temperature



**13.83°C**

## Average Atmospheric CO<sub>2</sub>



**301 ppm**





# 1930s

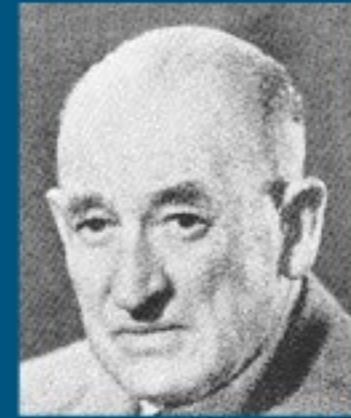
**BIMCO** supporting shipping since 1905

## BIMCO NEWS ...

### BIMCO Presidents:



Sir William A. Souter  
United Kingdom,  
1929-1933



Major T. Russell Cairns  
United Kingdom,  
1933-1938



Fr. Odfjell  
Norway,  
1938-1949

“There is one institution which has done admirable work for the merchant shipping not only of this country, but of all the Northern European countries, namely BIMCO.”

—Lord Runciman, UK parliament, 1934

P&I clubs admitted as Members of BIMCO. (1932)

BIMCO retrenches during the Great Depression as membership decreases due to the global economic crisis – meetings are reduced and staffing levels cut.

## GENERAL SHIPPING NEWS ...

Plans to expand Panama Canal begin.

Ships transition from coal to fuel oil.



Unloading American made Ford car onto dock in Montevideo, Uruguay. (1930s)

The Great Depression takes hold. Global trade shrinks significantly due to falling demand, collapsing commodity prices and protectionist policies such as the US Smoot-Hawley Tariff.

Many ships laid up, scrapped or operated at a loss and many companies went bankrupt or merged leading to concentration of shipping ownership.



The port Dairen is one of the biggest harbour in orient and the entrance port to Manchuria. (Shimbun Rungo Illustration Dept. 1932)

## Global Population



**2.3 billion**

## Global Average Temperature

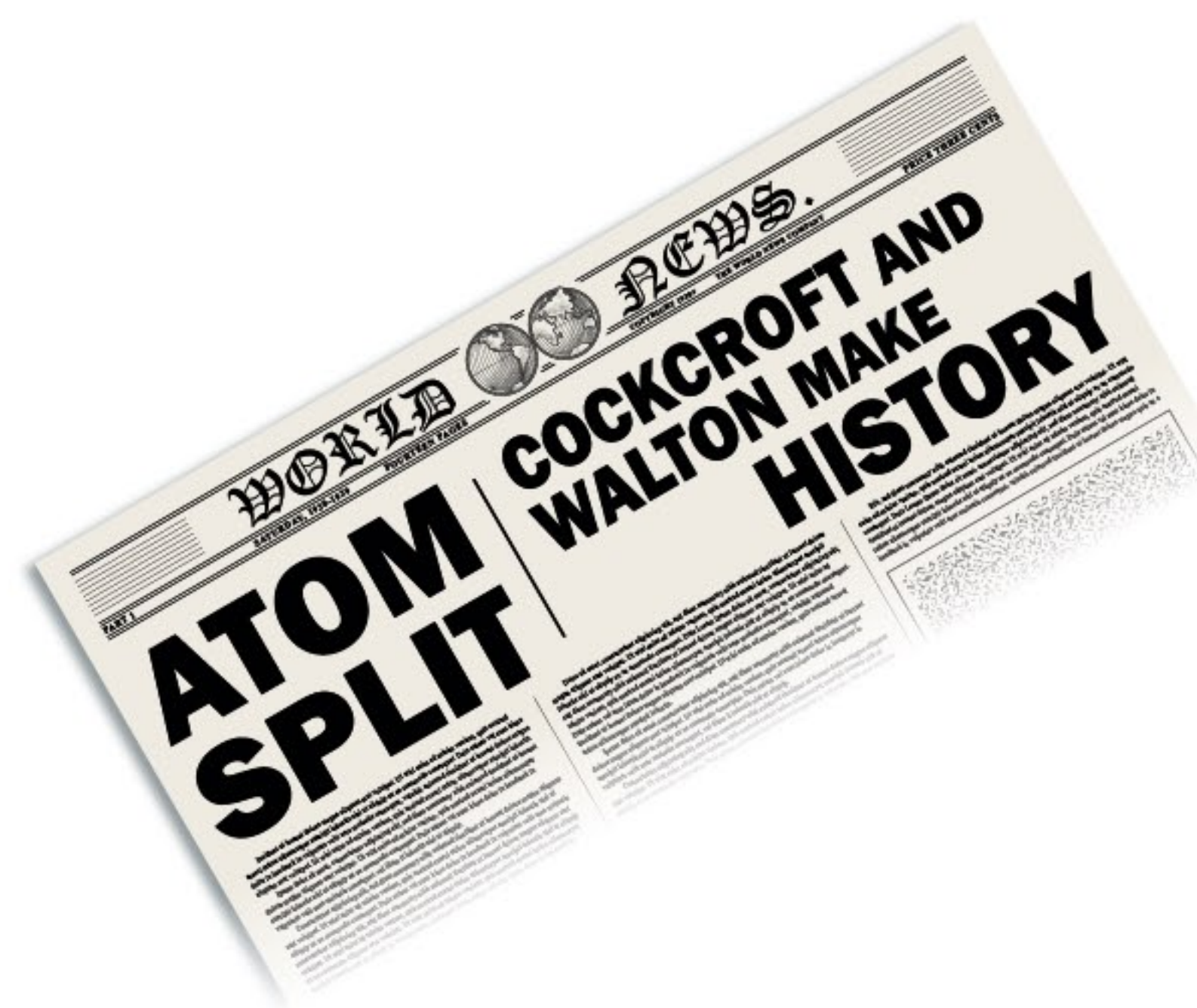


**13.96°C**

## Average Atmospheric CO<sub>2</sub>



**305 ppm**

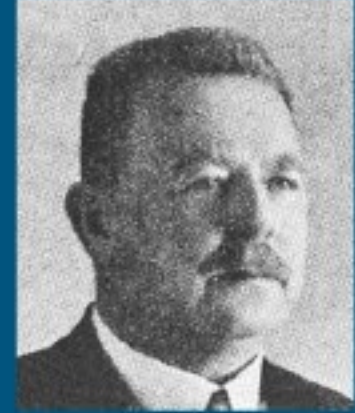




# 1940s

## BIMCO NEWS ...

### BIMCO Presidents:



FR. Odfjell  
Norway,  
1938-1949



Emanuel Högberg  
Sweden,  
1949-1951

“Consider the saving in time and money to be able to meet such a number of owners at one place, shake hands with them and discuss matters of common interest.”

—Hans Steuch, Secretary General, 1935-1970

BIMCO's language of communication changes from English to German during the wartime occupation of Denmark by Germany.

## GENERAL SHIPPING NEWS ...

United Nations General Assembly opens in London.

IMO formally established and was originally named Inter-Governmental Maritime Consultative Organization.

The T2 tanker design is introduced.

Wilhelm Gustloff is torpedoed by a Soviet submarine, leading to the loss of 9,400 lives.



An aerial view of a convoy in the Atlantic; two escorts can be seen in the foreground (1941). During the course of the war 366,852 tons of Allied Merchant shipping were sunk in the Atlantic.



The Portuguese freighter ss. Maria Amelia picks up the shipwrecks from the cargo ship ss. "Polyphemus" (1930) of the Nederlandsche Steamvaart Maatschappij "Ocean", after the ship, on its way from Sydney to England (via the Panama Canal), under Captain C. Koningstein, was torpedoed at 468 miles from New York by the German submarine "U 578". This killed 15 people on board. Survivors of the torpedoed vessel were well treated by the crew of the Portuguese vessel. (26 May 1942) (MN [Merchant Navy]/Anefo London series)

## Global Population



**2.5 billion**

## Global Average Temperature



**14.04°C**

## Average Atmospheric CO<sub>2</sub>



**310 ppm**





# 1950s

## BIMCO NEWS ...

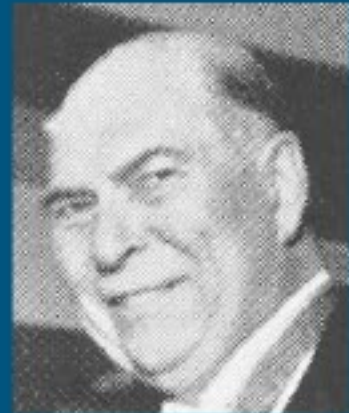
### BIMCO Presidents:



Emanuel Högberg  
Sweden,  
1949-1951



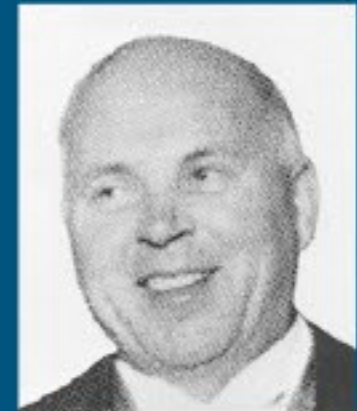
Sir John Fisher  
United Kingdom,  
1951-1953



Thomas S. Falck Jr.  
Norway,  
1953-1955



Eigil Hahn-Petersen  
Denmark,  
1955-1957



Birger Krogius  
Finland,  
1957-1959



R.F. Scovell  
United Kingdom,  
1959-1961

BIMCO moves its headquarters to Kristianiagade in Copenhagen. (1957)



Delegates listen attentively at BIMCO's General Meeting in "Binnenhof" in the Hague. (1953)



The 1955 General Meeting: (left to right), HRH The Princess Margaretha, Mr. Thomas Falck (BIMCO's President at that time), Lady Souter, Mrs. Ulla Thulin-Willers (Stockholm), Sir William Souter (Newcastle upon Tyne), Mr. Consul General P.G. Thulin (from Stockholm, who attended every BIMCO General Meeting for 54 years), Mrs. Andresen (Copenhagen), Mr. Thorkil Kristensen (Copenhagen), Sir John Fisher (Barrow in Furness, President of BIMCO 1951-53), Mr. L.O. Norman and Mr. Andresen (both from Copenhagen), the Hon. Lionel Chevrier (Ottawa) and Mr. Klaus Wiese Hansen (Bergen).

## GENERAL SHIPPING NEWS ...

First modern shipping container developed.

Egypt takes control of Suez Canal.

First nuclear-powered merchant ship the NS Savannah is launched.



NS (Nuclear Ship) Savannah, the first commercial nuclear power cargo vessel, enroute to the World's Fair in Seattle. (pictured here in 1962).

Construction of larger and more efficient supertankers.



The world's largest tanker at 43,000 tonnes, "Tina Onassis" has arrived in the Thames and is berthed at Purfleet, Essex. Over 750 feet long, she is the largest tanker in the world and is named after the daughter of a Greek shipowner. The ship, which took 15 months to build in Germany, has brought a cargo of oil from the Persian Gulf and is now on loan to a British oil Company. The "Tina Onassis" is the largest vessel to come up the Thames - the previous largest being the "Dominion Monarch" - 27,000 tons. (January 11, 1954)



The world's largest oil tanker, the 47,750-ton Spyrios Niarchos, was launched at Barrow-in-Furness. Vickers Armstrong built the tanker for Greek shipping magnate Stavros Niarchos, who attended the launching. Flying the Greek flag, the ship will carry crude oil from the Persian Gulf to refineries in the United Kingdom. The new tanker is 757 feet long, and turbines of 20,000 horsepower will drive it at a maximum speed of 17. (December 2 1955)



Car exhaust from merchant ship to Newark Harbor, New Jersey, 1959



## Global Population



**2.7 billion**

## Global Average Temperature



**13.98°C**

## Average Atmospheric CO<sub>2</sub>



**315 ppm**



# 1960s

## BIMCO NEWS ...

### BIMCO Presidents:



R.F. Scovell  
United Kingdom,  
1959-1961



J.G.A. Fontein  
Netherlands,  
1961-1963



Jack C.H. Peugniez  
France,  
1963-1967



Gerhard Hansen-Stahl  
Germany, 1967-1969



B.D. Odfjell  
Norway,  
1969-1971

BIMCO appointed observer status at UNCTAD and the IMO. (1969)

## GENERAL SHIPPING NEWS ...

Organization of Petroleum Exporting Countries (OPEC) formally constituted.

First fully cellular container ship is launched.

Expansion of shipping routes and larger ports to accommodate growing maritime traffic.

Supertanker Torrey Canyon runs aground leading to changes in maritime environmental regulations.

RoRo ships introduced to meet the demand of a booming automotive industry.



East Germany, Wartburg cars for shipping, Rostock harbour. (1960s)



The American tanker Manhattan – the largest ship to ever transit the Suez Canal – went through without incident. (13 March 1962)



1960's era shipboard radio communication equipment

## Global Population



**3.3 billion**

## Global Average Temperature



**13.99°C**

## Average Atmospheric CO<sub>2</sub>



**320 ppm**





# 1970s

## BIMCO NEWS ...

### BIMCO Presidents:



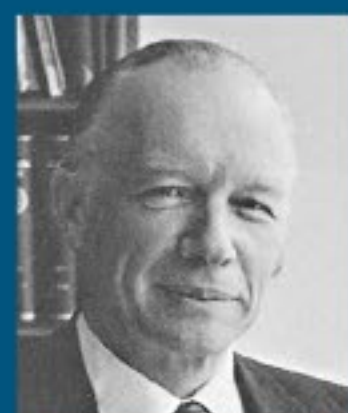
B.D. Odfjell  
Norway,  
1969-1971



Lennart Parkfelt  
Sweden,  
1971-1973



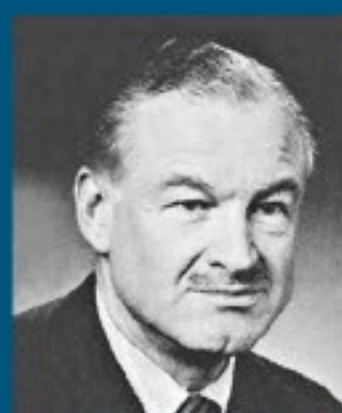
David C. Souter  
United Kingdom,  
1973-1975



Nils L. Wetterstein  
Finland,  
1975-1977



Tristan Vieljeux  
France,  
1977-1979



Gerrit Warnderink-  
Vinke  
Netherlands, 1979-1981

The title of "BIMCO" is formally adopted in its new rules of 1975.

BIMCO launches detailed ice reports for members

## GENERAL SHIPPING NEWS ...

The IMO adopts the International Convention on the Prevention of Marine Pollution by Dumping of Wastes and Other Matter (London Convention).

OPEC hikes oil prices with far reaching effects on world trade and shipping.

US Senate votes to turn canal over to Panama by year 2000.

The IMO adopts the International Convention on Standards of Training, Certification, and Watchkeeping for Seafarers (STCW).



The 261 metre long Gautama Buddha, the largest ship in the Indian merchant fleet, is seen here unloading 50,000 tonnes of iron ore at the British Steel Corporation's Redcar ore terminal. (15 July 1974)

## Global Population



**4 billion**

## Global Average Temperature



**14.00°C**

## Average Atmospheric CO<sub>2</sub>



**330 ppm**

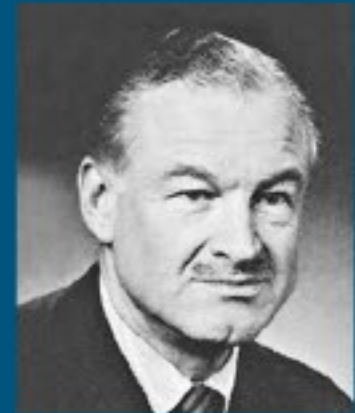




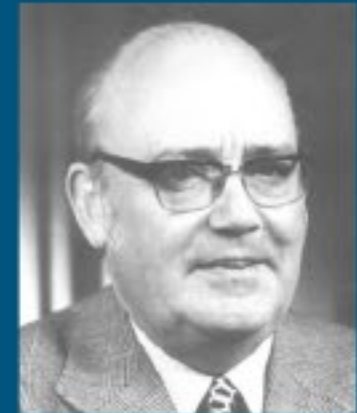
# 1980s

## BIMCO NEWS ...

### BIMCO Presidents:



Gerrit Warnderink-Vinke  
Netherlands, 1979-1981



J.D. Lauritzen  
Denmark, 1981-1983



Eduardo Bages  
Spain, 1983-1985



Atle Jebsen  
Norway, 1985-1987



Helmut Sohmen  
Hong Kong, China, 1987-1989



George Livanos  
Greece, 1989-1991

Dr Helmut Sohmen becomes BIMCO's first President from the Asian shipping community.

*“BIMCO's achievements... consist of helping the industry work more efficiently and profitably on a daily basis.”*

—Dr Helmut Sohmen,  
inaugural Presidential address, 1987

The first BIMCO General Meeting held outside Europe takes place in San Francisco. (1985)

BIMCO officially goes “online”. (1 June 1989)



BIMCO's staff receiving computer training in preparation for the electronic age.

BIMCO sets up a Marine Department to provide technical support to members and starts to deliver “educational services” in the form of training for maritime professionals.

BIMCO's Documentary Council changes its name to the Documentary Committee.

## GENERAL SHIPPING NEWS ...

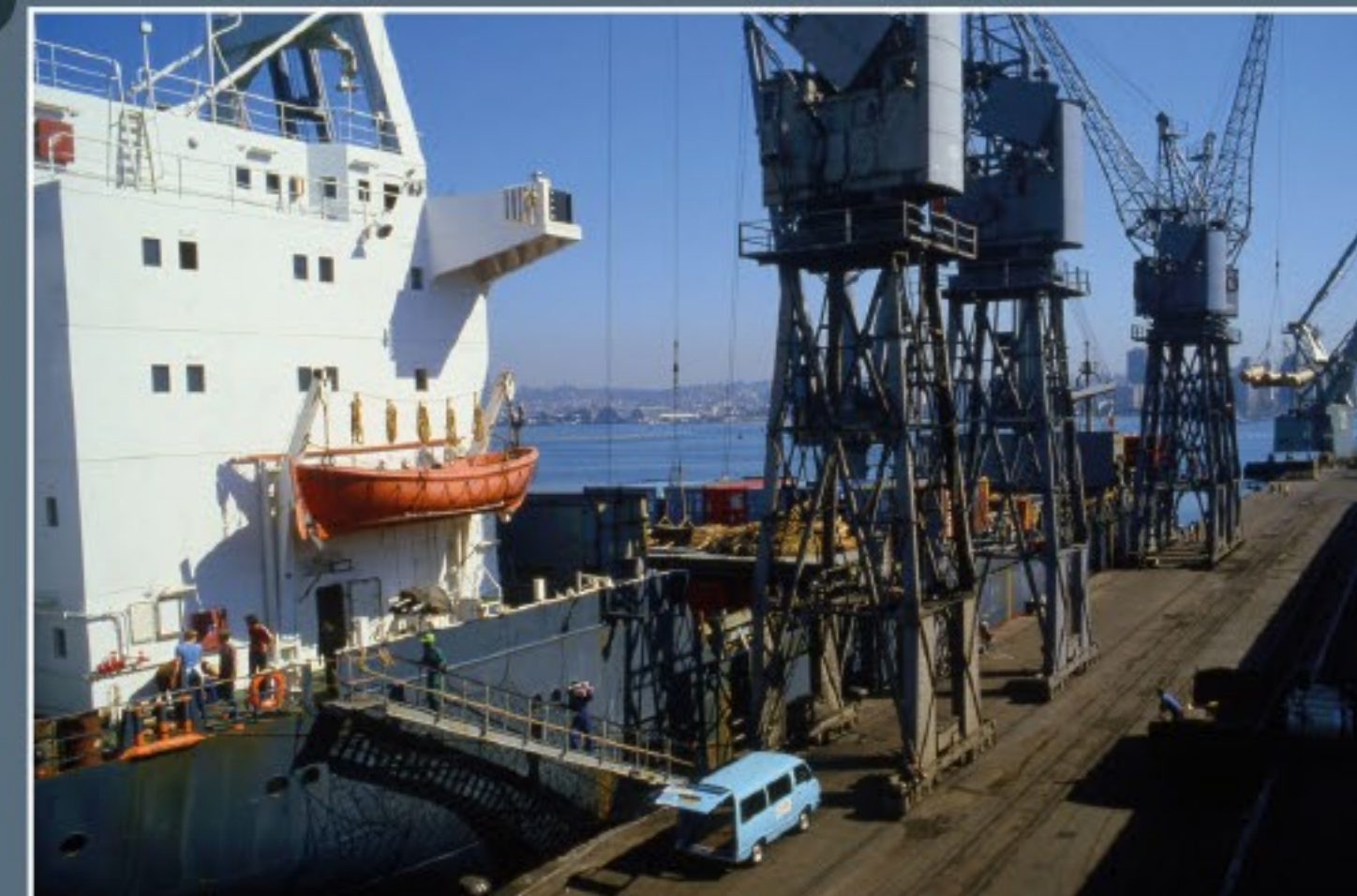
International Convention for the Prevention of Pollution from Ships (MARPOL) comes into force.

Development of Panamax ships.

PLO terrorists hijack Achille Lauro, Italian cruise ship.

MV Doña Paz collides with the oil tanker MT Vector in the Philippines, killing 4,386.

Exxon Valdez oil spill in Alaska causing extensive environmental damage.



Docks scene at Durban harbour, South Africa, 1981

## Global Population



**4.8 billion**

## Global Average Temperature

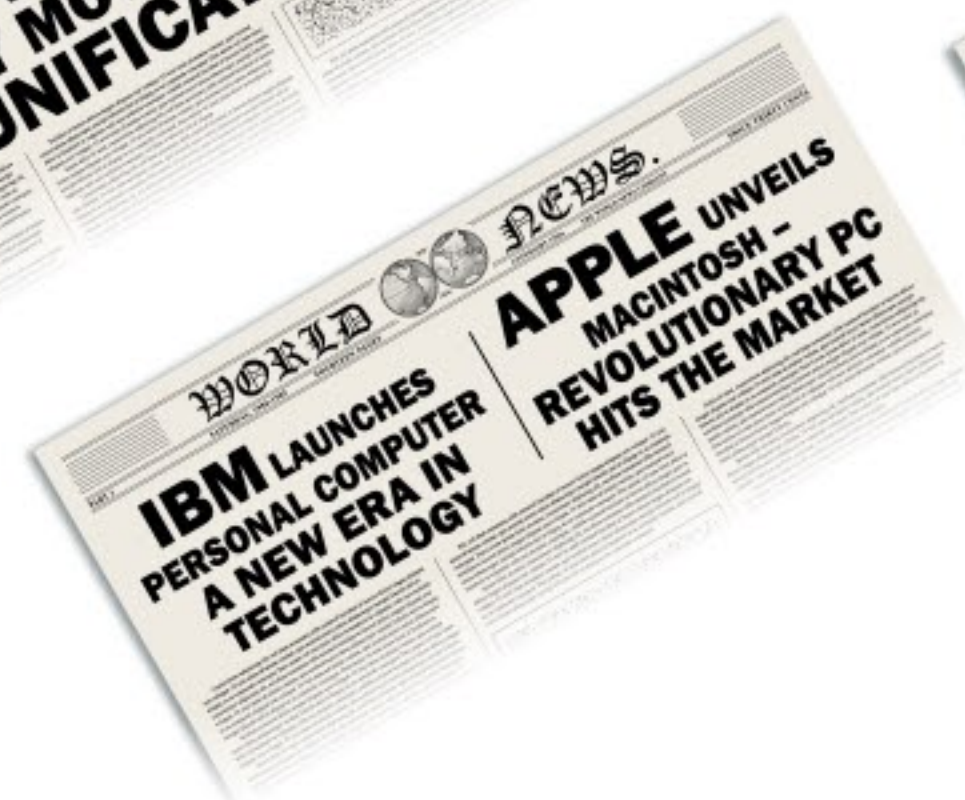
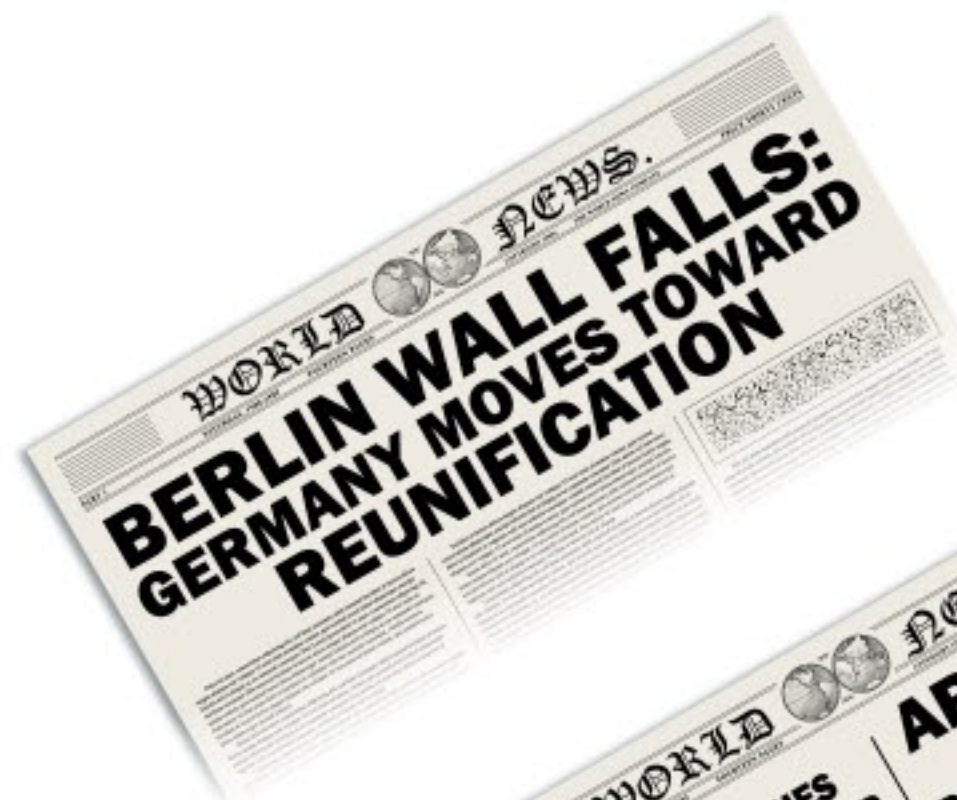


**14.18°C**

## Average Atmospheric CO<sub>2</sub>



**345 ppm**





# 1990s

**BIMCO** supporting shipping since 1905

## BIMCO NEWS ...

### BIMCO Presidents:



George Livanos  
Greece,  
1989-1991



Ian Denholm  
United Kingdom,  
1991-1993



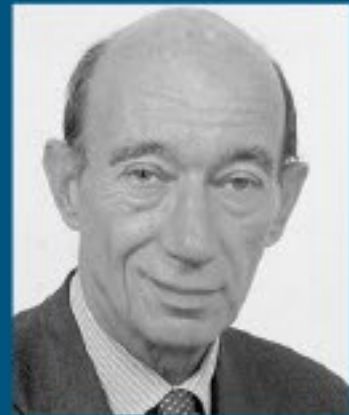
Cheng-Eng Lua  
Singapore,  
1993-1995



Fridtjof Lorentzen  
Norway,  
1995-1997



Ronald Bergman  
Sweden,  
1997-1999



Philippe Poirier  
d'Angé d'Orsay  
France, 1999-2001

BIMCO moves its headquarters to Bagsværd, a suburb of Copenhagen. (1990)



The first BIMCO General Meeting held in Asia takes place in Singapore. (1993)

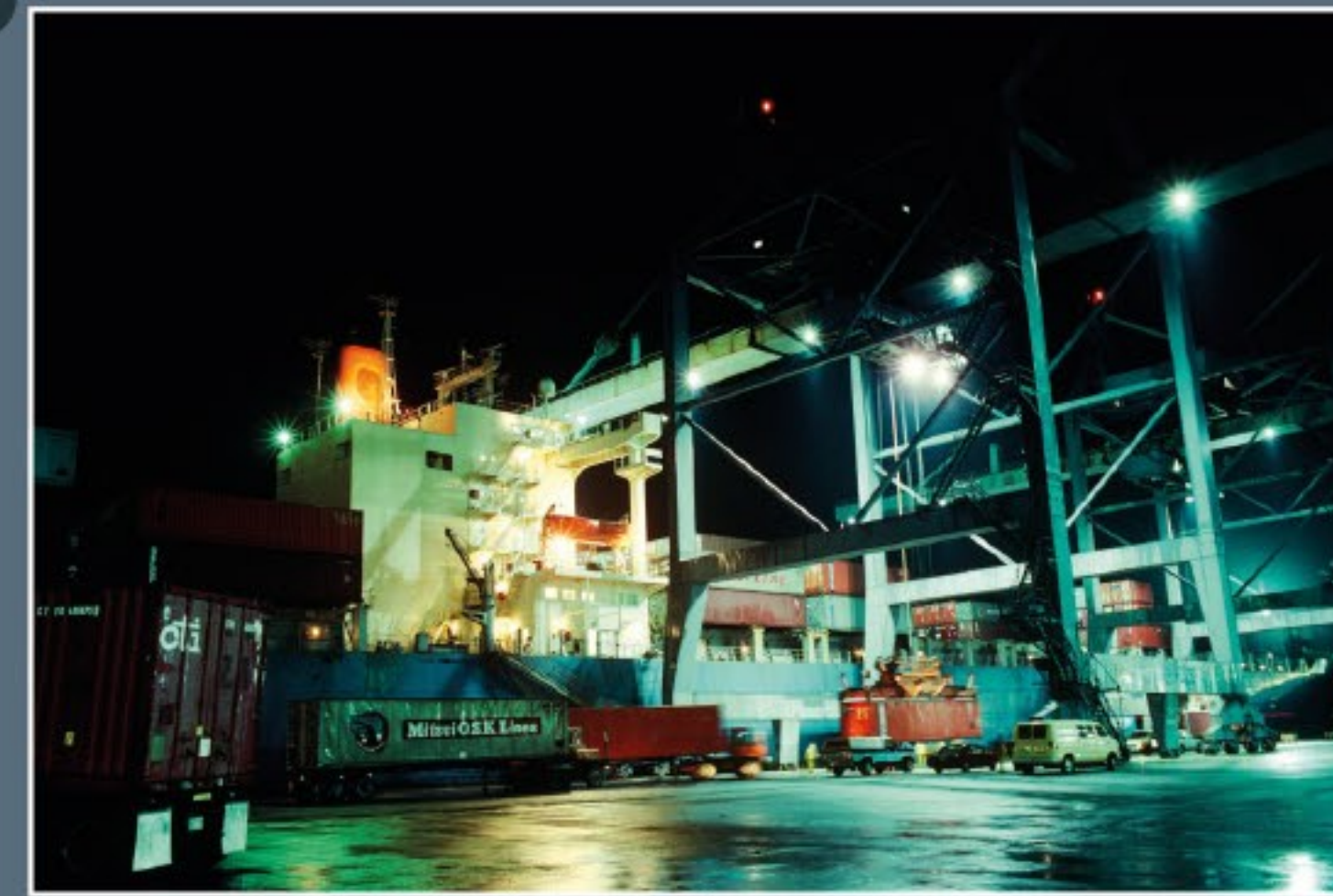
## GENERAL SHIPPING NEWS ...

The introduction of double hull tankers.

The Sea Empress oil tanker runs aground leading to changes in maritime safety regulations.

Kyoto Protocol is adopted, setting binding targets for reducing greenhouse gas emissions.

The ISM Code becomes mandatory for all ships.



Offloading shipping containers from container ship during night shift, Savannah, Georgia USA (1990s)



Sailors from the US Navy amphibious assault ship USS Wasp (LHD 1) aim a fire hose at burning cargo containers aboard the merchant cargo vessel Sea Land Mariner in the Mediterranean Sea (18 April 1998)

## Global Population



**5.5 billion**

## Global Average Temperature



**14.31°C**

## Average Atmospheric CO<sub>2</sub>



**360 ppm**





# 2000s

**BIMCO** supporting shipping since 1905

## BIMCO NEWS ...

### BIMCO Presidents:



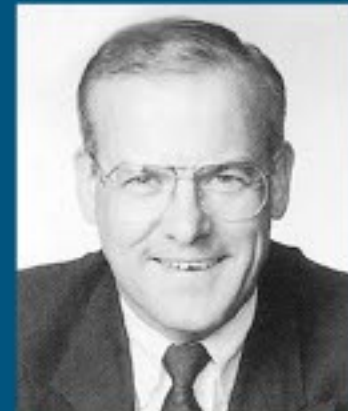
Philippe Poirier  
d'Angé d'Orsay  
France, 1999–2001



Michael Everard CBE  
United Kingdom,  
2001–2003



C.C. Tung  
Hong Kong, China  
2003–2005



Knud Pontoppidan  
Denmark,  
2005–2007



Philip Embiricos  
Greece,  
2007–2009



Robert Lorenz-  
Meyer  
Germany, 2009–2011

BIMCO launches an internet document-editing application in 2001 – “BIMCO's Idea”. (now known as SmartCon)

**“BIMCO's members are our most treasured asset and we have always valued the strong bond between the secretariat and the members.”**

—Michael Everard, BIMCO President, 2001–2003

BIMCO launches the solid cargo database. (2003)

BIMCO sets up the Security and International Affairs department to handle matters relating to security such as piracy, stowaways and drug smuggling. (2005)

BIMCO joins the Round Table of international maritime associations.

## GENERAL SHIPPING NEWS ...

MV Treasure sinks causing an oil spill – around 40,000 penguins rescued.

September 11 attacks in the US impacts global shipping operations. (2001)

Piracy off the coast of Somalia escalates.



The crew of the merchant vessel MV Faina stand on the deck of the ship Sunday, after a US Navy request to check on their health and welfare. The Belize-flagged cargo ship, owned and operated by Kaalbye Shipping, Ukraine, was seized by pirates on 25 September and forced to proceed to anchorage off the Somali Coast. The ship is carrying a cargo of Ukrainian T-72 tanks and related military equipment. (19 October 2008, UPI Photo/Jason R. Zalasky/U.S. Navy)

Adoption of the Automatic Identification System (AIS).

Container ship MSC Napoli beached leading to more focus on structural aspects of vessels.

A global financial crisis leads to a significant downturn in global trade, impacting shipping volumes and freight rates.

Prestige oil tanker sinks prompting further regulatory changes in tanker design and operation.



Suez Canal, Egypt – The Shell Oil tanker/storage vessel / mobile refiner / multi use platform, The Bonga, transiting the Suez Canal, en route to London from Malaysia. (10 September 2002, photo by Barry Iverson)

## Global Population



**6.5 billion**

## Global Average Temperature



**14.51°C**

## Average Atmospheric CO<sub>2</sub>



**380 ppm**





# 2010s

## BIMCO NEWS ...

### BIMCO Presidents:



Robert Lorenz-Meyer  
Germany, 2009-2011



Yudhishtir Khatau  
India, 2011-2013



John Denholm  
United Kingdom, 2013-2015



Philippe Louis-Dreyfus  
France, 2015-2017



Anastasios Papagiannopoulos  
Greece, 2017-2019



Şadan Kaptanoğlu  
Türkiye, 2019-2021

BIMCO welcomes the first female President since its formation in 1905.

BIMCO opens offices in Athens, Shanghai and Singapore.

## GENERAL SHIPPING NEWS ...

Deepwater Horizon drilling rig explodes leading to regulatory changes.

Piracy in the Gulf of Guinea escalates.

Costa Concordia capsizes, killing 32, leading to changes in safety regulations.

Egypt begins project to expand the Suez Canal.

The IMO Ballast Water Management Convention entered into force.

Expansion of the Panama Canal completed.



Cyber attack hits Maersk disrupting operations and highlighting the importance of cyber security.



A large Cosco container ship departs from the Port of Piraeus Athens Greece. (2019)



Maersk Lines new Triple E ship Majestic Mærsk at quay in Copenhagen before going into service. (September 2013)

## Global Population



**7.3 billion**

## Global Average Temperature

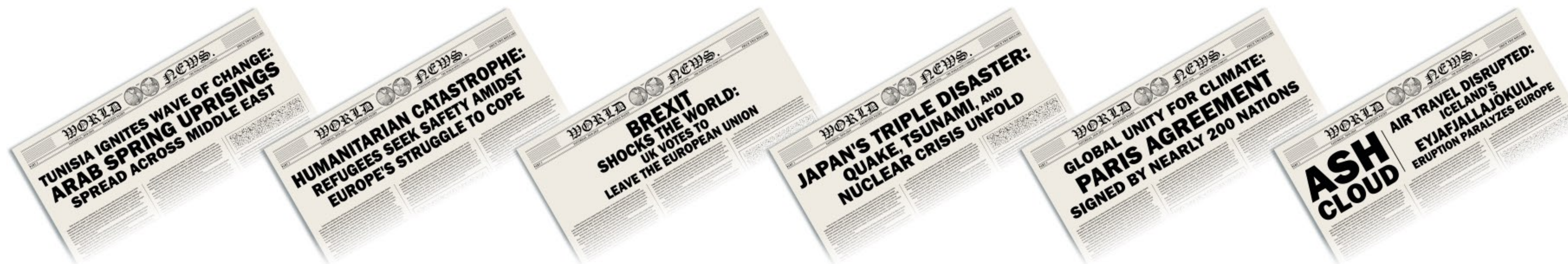


**14.83°C**

## Average Atmospheric CO<sub>2</sub>



**400 ppm**





# 2020s

## BIMCO NEWS ...

### BIMCO Presidents:



Şadan Kaptanoğlu  
Türkiye,  
2019-2021



Sabrina Chao  
Hong Kong, China  
2021-2023



Nikolaus Schües  
Germany,  
2023-2025



Paul Pathy  
Canada,  
2025-2027

2027-2029

2029-2031

BIMCO's committee meetings held fully online for the first time in history due to COVID pandemic restrictions.

BIMCO opens offices in London (2021), Brussels (2022) and Houston (2023).

BIMCO welcomes its first President from the Americas shipping community.

## GENERAL SHIPPING NEWS ...

The IMO 2020 sulfur cap regulation comes into force.

COVID-19 pandemic causes significant disruptions in global shipping.



President Biden announced that Port of LA will operate 24 hours a day in effort to ease cargo backlog. (13 October 2021)

IMO set ambitious targets to reduce greenhouse gas (GHG) emissions by 2050.

Industry moves towards adoption of renewable and low-carbon fuels and embraces digital technologies.

Ever Given blocks the Suez Canal for six days. (2021)



The Ever Given, a Panama-flagged cargo ship is pulled by tugboats, in the Suez Canal, Egypt on Monday, March 29, 2021.

Emissions Trading System (ETS) and FuelEU Maritime introduced by the EU.

Attacks on commercial ships in the Red Sea by Houthi rebels in Yemen, killing and injuring seafarers and disrupting trade routes.

## Global Population



**8 billion**

## Global Average Temperature



**15.37°C**

## Average Atmospheric CO<sub>2</sub>



**415 ppm**

