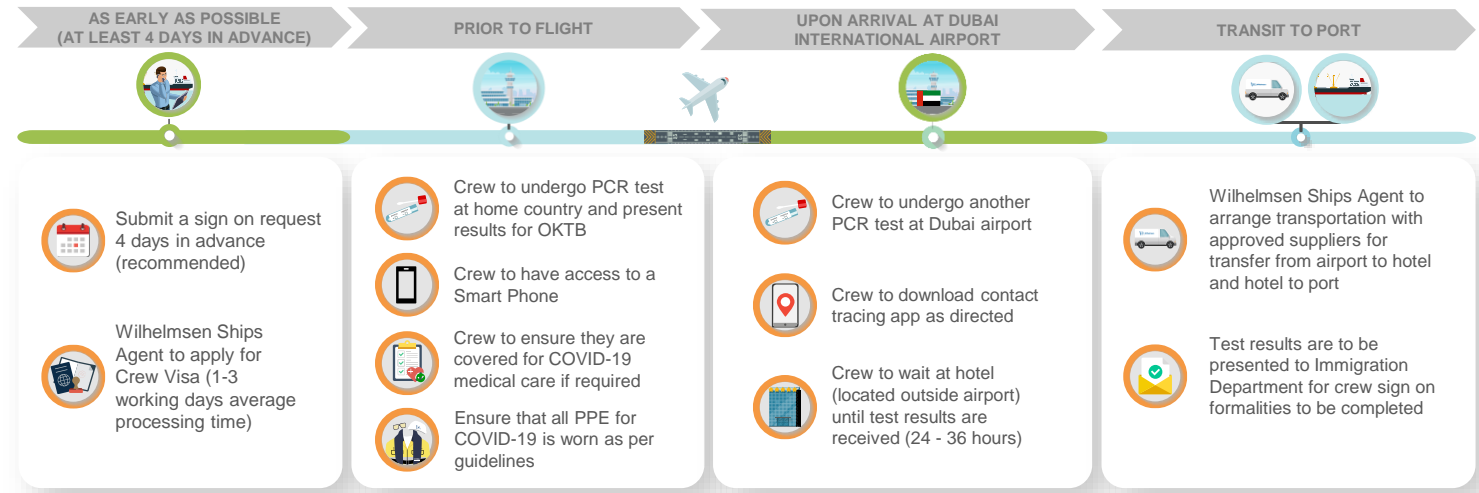


Crew Sign On Guidelines for Dubai, UAE

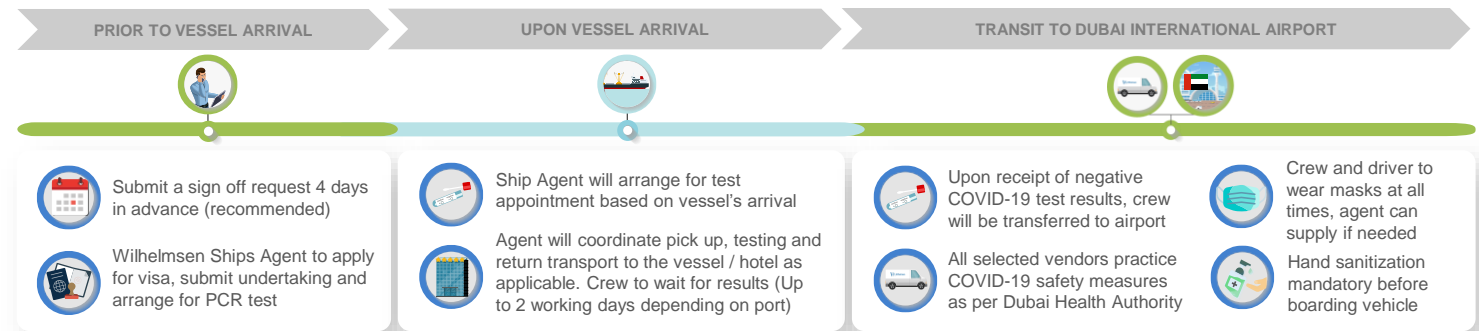


Crew Change Requirements For Dubai

PREREQUISITES

- Polymerase Chain Reaction (PCR) test results
- Smart Phone to download contact tracing app
- Medical Insurance covering COVID-19 care
- Confirmed flight tickets

Crew Sign Off Guidelines for Dubai, UAE



Information on Inbound Travel & FAQ



Please refer to the following:

<https://www.dubaiairports.ae/alert/latest-covid-19-update->

<https://www.emirates.com/in/english/help/flying-to-and-from-dubai/?>

COVID-19 Testing



PCR test for sign off will be done at DP World Clinic. It can also be arranged externally via Ships Agent



Customer must sign an undertaking letter on their company letterhead with the authorized signature and stamp



COVID-19 test timings are from 0700 hrs – 1500 hrs, Sunday to Thursday (except Public Holidays)



Off-signers must stay at EasyHotel in Jebel Ali until test results are received. If test results are positive, crew must undergo quarantine and comply with Dubai Health Authority regulations.

Local Government Requirements



Please refer to the following:

<https://fta.gov.ae/en/home.aspx>

<https://gdrfad.gov.ae/en>



Keep updated with the latest port restrictions on our COVID-19 Port Restrictions Map

Note: Recommended to view on desktop

<https://tinyurl.com/wilhelmsencovid19>

VISIT MAP

Contact Us

Wilhelmsen Ships Service (UAE)
FL24, Executive Heights building, Barsha Heights, (TECOM C), Dubai. United Arab Emirates

Phone: (+971) 4 382 3888

Email:

WSS.DUBAI.OPERATIONS@wilhelmsen.com